

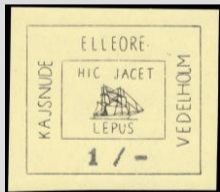
1955 30th April: Sailing ship, type KV1



KV5



KV6



KV7



KV8

KV5	70	H	Black on /light grey
KV6	110	H	Black on scarlet
KV7	1	M	Black on brown-yellow
KV8	3 M + 10	H	Black on red/light grey
KV7.Da	1	M	Two bars in denomination

Set

KV1-KV4B

(4 values)