

1980 29<sup>th</sup> May: Provisional and definitive issue, perf. 10.5 v (S18 + S19)



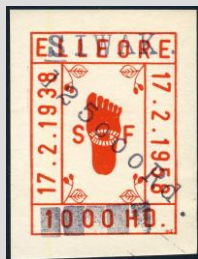
S19



S20



S21



S22

S19	100	R	Black o/p '100Rd' on no. S16
S20	1000	R	Black o/p '1000Rd' on no. 0351.Aa
S21	1000	R	Black o/p '1000Rd' on no. 0354.Aa
S22	12500	R	Black o/p '12500Rd' on no. S15

Set

S19-S22A/B

(4 values)